

# H-MP 3 GRINDER - PRESS



## H-MP 3 GRINDER-PRESS

### USE

The machine is designed to make "horchata" or orgeat, a cold drink made of "chufas" (tiger nuts) or almonds. This machine carries out the following processes: grinding, water supply, maceration and subsequent filtering. The machine can work with batches of up to 3kg, and it is not necessary to stop the machine between batches.

### CONSTRUCTION

The machine is constructed of 18/8 AISI-304 standard stainless steel throughout. The machine can be assembled on four feet with rubber buffers or on four wheels with brakes, so that the machine can be moved easily, or fixed in place while in operation. The most important elements of the machine are:

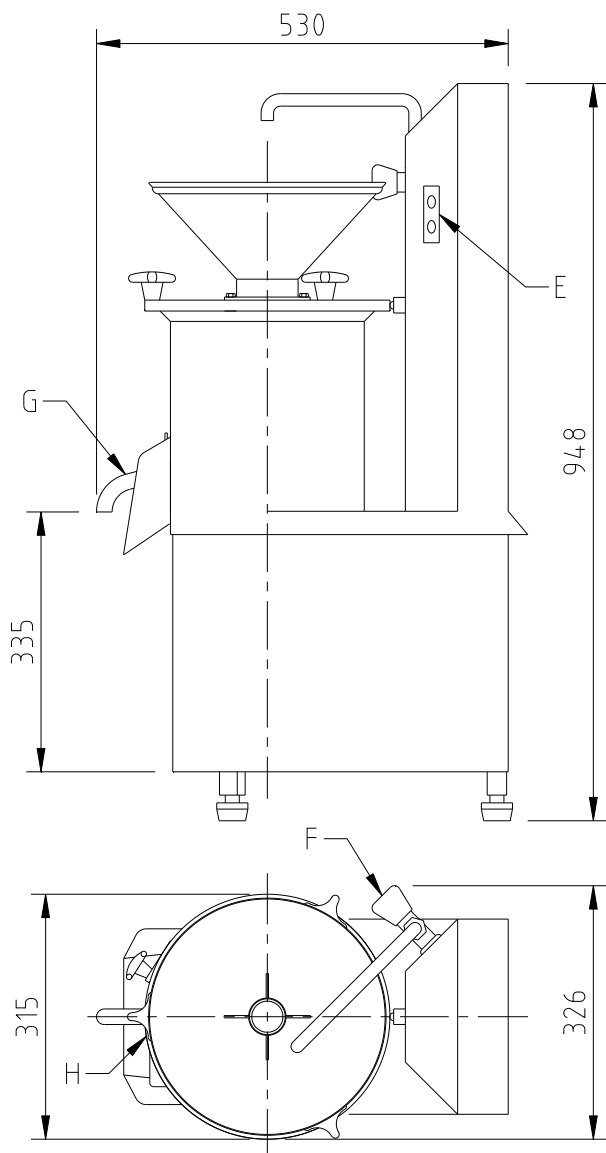
- A hopper for the tiger nuts or almonds.
- A tap (F) to regulate the in-flow of water.
- An outlet tube (G) for the tiger nut or almond "milk".
- A gate (H) for emptying the squeezed pulp.
- A tank with an impeller and crusher hammers inside. As this piece rotates the grinding and maceration take place.
- Around the crusher hammers is a four-edged sieve, with holes of differing sizes for working with either tiger nuts or almonds. The rotation of the crusher hammers inside this piece produces the grinding.

### OPERATION

Place a container under the spout (G) to collect the tiger nut or almond "milk". Pour the tiger nuts or almonds into the hopper (max. 3 Kg). Then adjust the flow of water with the tap (F). Pressing the start button (E) starts the machine. Once the desired amount of tiger nut or almond milk is obtained, close the water tap, remove the container of milk from the outlet pipe and place another to collect the pulp. With the machine turned on, open the gate (H) to expel the squeezed pulp, thereby completing the cycle and readying the machine to restart the process.

### NOTE

The manufacturer reserves the right to make partial or total modifications to the measurements or design of this machine without such changes forming grounds for complaint.



## CHARACTERISTICS

<b>MODEL</b>	<b>H-MP 3</b>
<b>POWER (kW)</b>	1'5
<b>VOLTAGE AT 50 Hz. (Volts)</b>	230 o 400 (three-phase)
<b>HOPPER CAPACITY (kg)</b>	3
<b>CYCLE TIME (minutes)</b>	10
<b>NET WEIGHT (kg)</b>	55

## MECÁNICA JIJONENCA, S.A.

MANUFACTURE AND INSTALLATION OF MACHINERY FOR THE FOOD INDUSTRY AND PRESSURE DEVICES  
 POLIGONO INDUSTRIAL SEGORB, S/N. – TEL. 96 561 05 85 / 96 561 07 82 – FAX. 96 561 06 52  
 www.mejisa.com – e-mail: info@mejisa.com  
 03100 JIJONA (ALICANTE)

