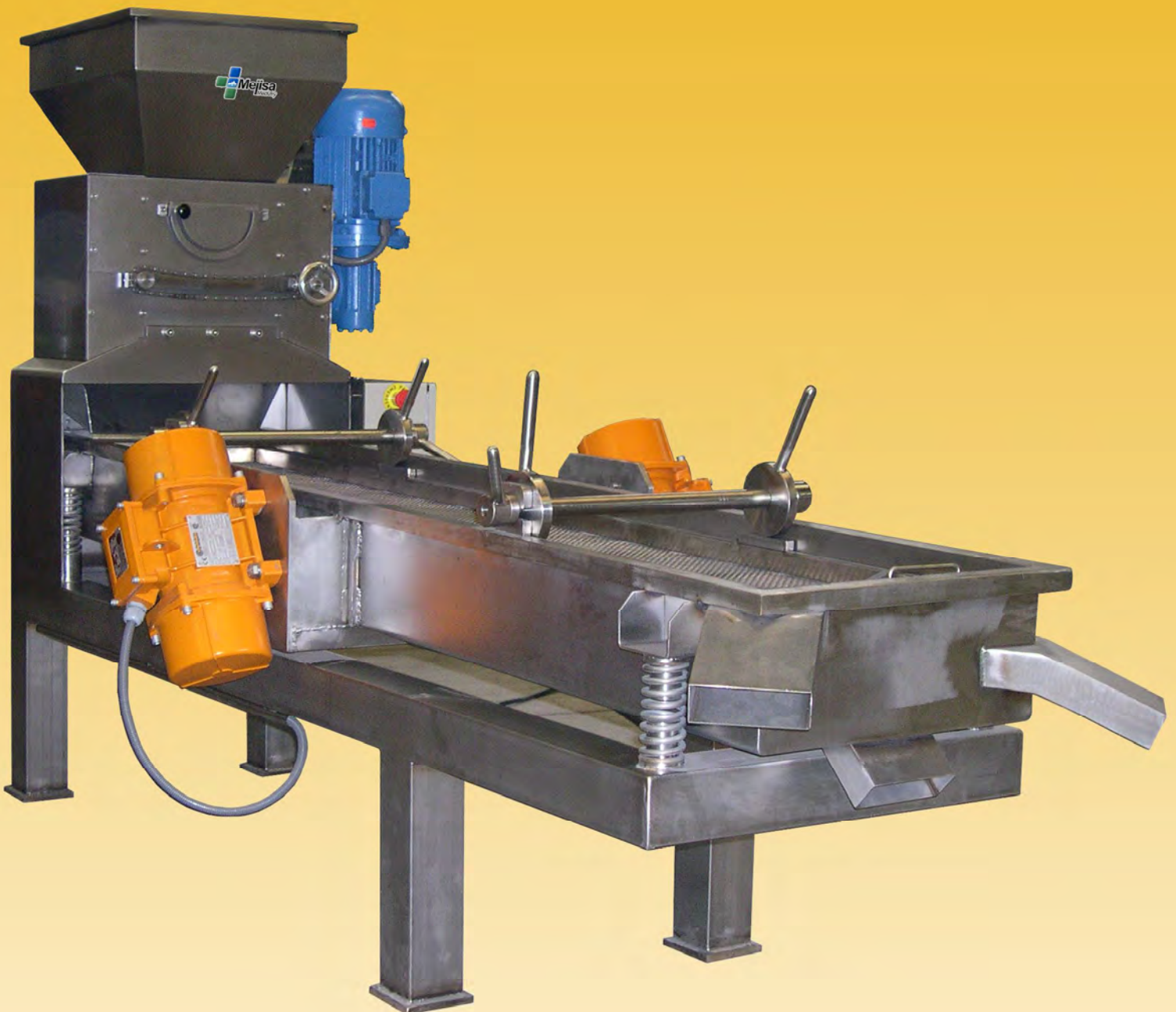


F-TC CRUSHER - SIEVER



F-TC CRUSHER – SIEVER

USE

The machine is designed to crush nuts such as almonds, peanuts, walnuts and hazelnuts into small pieces and then to sort the pieces into the different sizes.

CONSTRUCTION

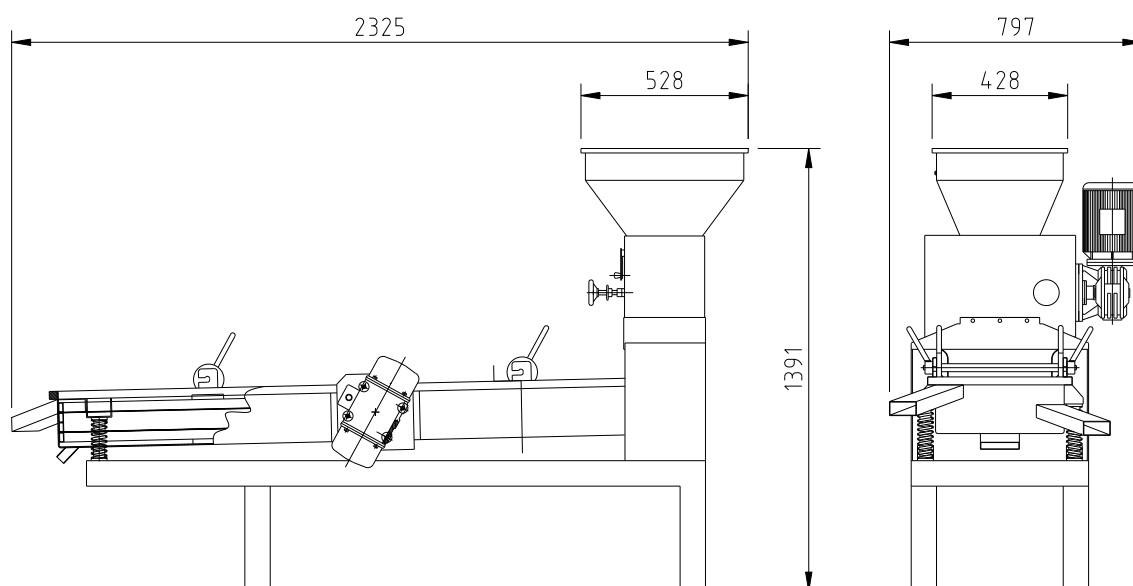
The machine is constructed of 18/8 AISI-304 standard stainless steel throughout. It is provided with two stainless steel toothed rollers driven by a gear-motor and also two vibrators for the sieves. The crusher has a hand wheel to regulate the space between the rollers in order to achieve the desired size of grain of the product. The sieves can be adjusted to the product that the customer wants to get.

OPERATION

Use the start button on the control panel to activate the crusher gear-motor and the sieve vibrators. Then put the nuts into the hopper of the crusher, where the toothed rollers chop them. From here, the pieces fall into the sieves to be sorted using the three different sieves and vibration. Place three containers to collect the final product, one in each outlet.

NOTE

The manufacturer reserves the right to make partial or total modifications to the measurements or design of this machine without such changes forming grounds for complaint.



CHARACTERISTICS

MODEL	T-C1
MOTOR POWER (kW)	1'1
VIBRATORS POWER (W)	2 x 300
MAXIMUM POWER (kW)	1'7
VOLTAGE AT 50 Hz. (Volts)	230 / 400 (three-phase)
CAPACITY (kg)	25
NET WEIGHT (kg)	485 (approximate)

MECÁNICA JIJONENCA, S.A.

MANUFACTURE AND INSTALLATION OF MACHINERY FOR THE FOOD INDUSTRY AND PRESSURE DEVICES
POLIGONO INDUSTRIAL SEGORB, S/N. – TEL. 96 561 05 85 / 96 561 07 82 – FAX. 96 561 06 52
www.mejisa.com – e-mail: info@mejisa.com
03100 JIJONA (ALICANTE)

